



2014-2020 Operational
Programme for the
European Union Funds
Investments in Lithuania

7th biannual international evaluation conference

EVALUATION OF INNOVATIONS AND INNOVATIONS IN EVALUATION



MINISTRY
OF FINANCE



18-19th of May 2017

Sapiegos Vilnius Tech Park | Antakalnio str. 17 | Vilnius, Lithuania

dr. Klaudijus Maniokas, Neringa Viršilienė

**Beyond GDP or how EU funds change
quality of life: use of composite indexes
for impact evaluation**

Content of the presentation

What

- is meant by quality of life and why quality of life is important?

Why

- composite indexes are needed to measure quality of life?

How

- did the quality of life change in 2007-2014?

What

- was the impact of European structural and investment funds (ESIF) on quality of life?

Background – 2 impact evaluations conducted by ESTEP Vilnius for the Ministry of Finance:

2014

Evaluation of the impact of EU structural assistance on quality of life, social exclusion and poverty reduction in Lithuania.

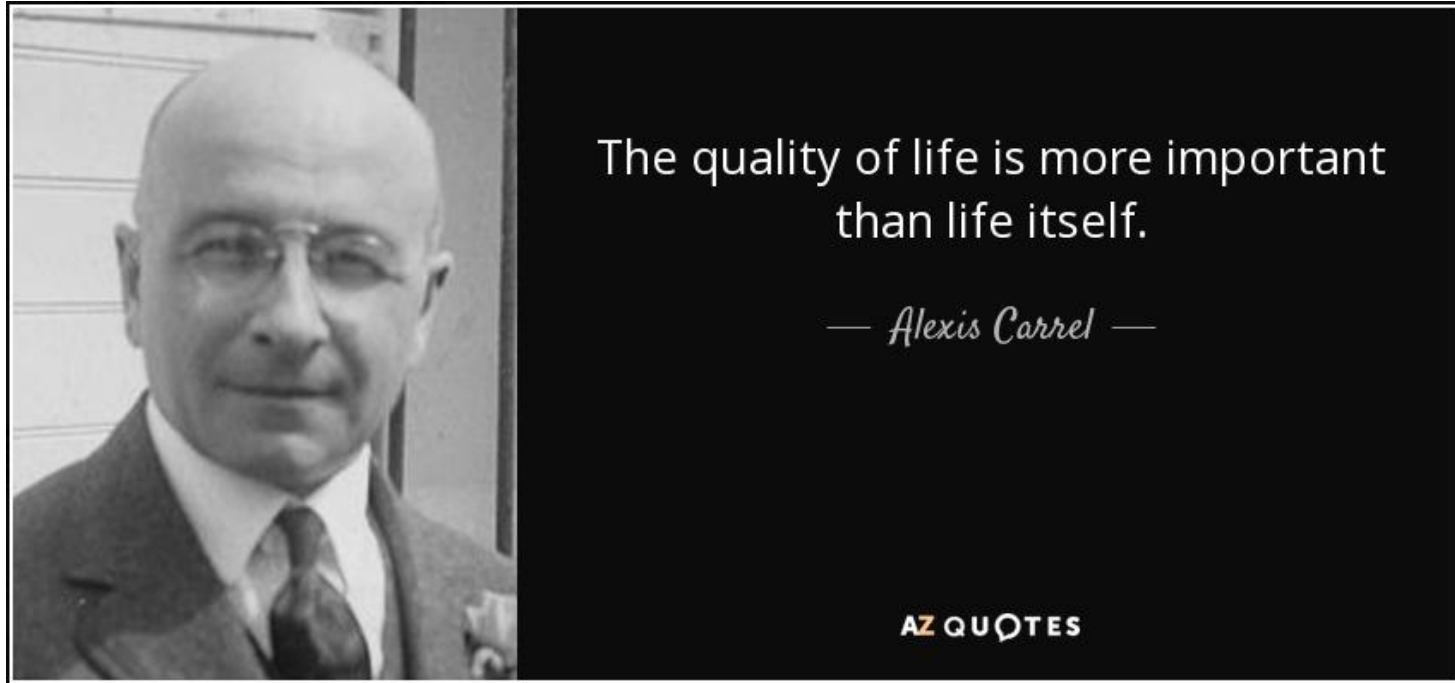
Quality of life index for Lithuania (NUTS1).

2016

Evaluation of the impact of 2007-2013 EU Structural Assistance on Lithuania's cities and towns.

Quality of life index for 60 Lithuanian municipalities (LAU1).

Why quality of life is important?



What is meant by quality of life?

Key dimensions of well-being

Material living standards

Health

Education

Personal activities including work

Political voice and governance

Social connections and relationships

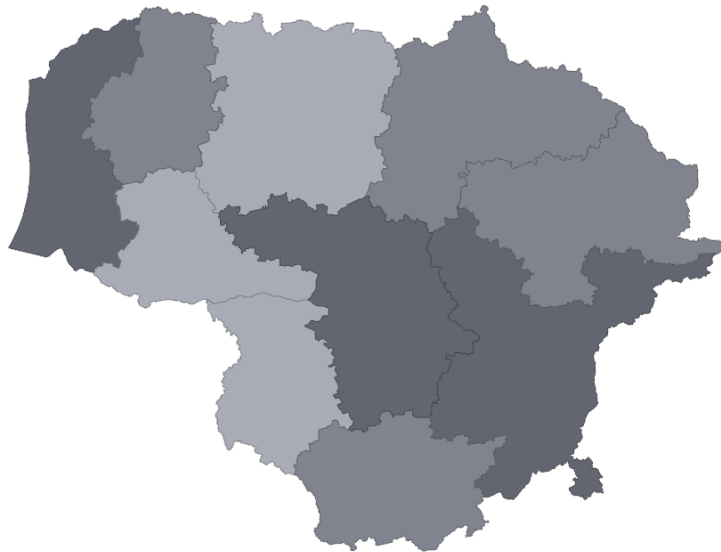
Environment (current and future conditions)

Insecurity of an economic and physical nature

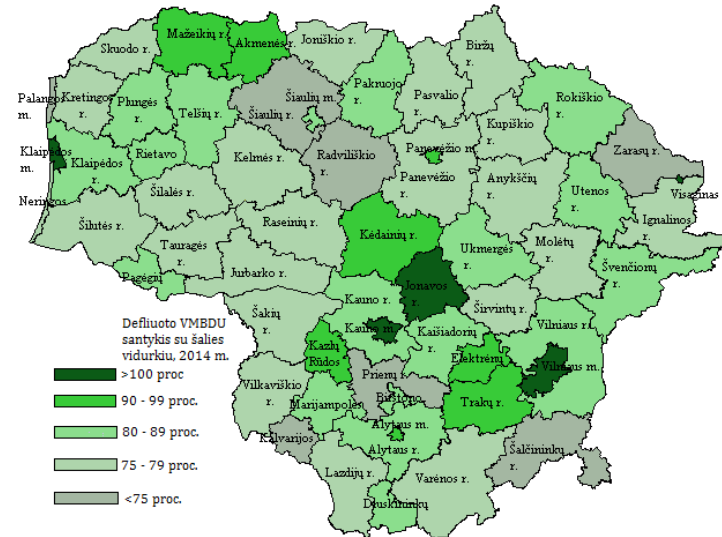
Source: Stiglitz J.E., Sen A., Fitoussi J. P., *Report by the Commission on the Measurement of Economic Performance and Social Progress.*

GDP per capita is not enough to measure well-being and quality of life?

LT - NUT3

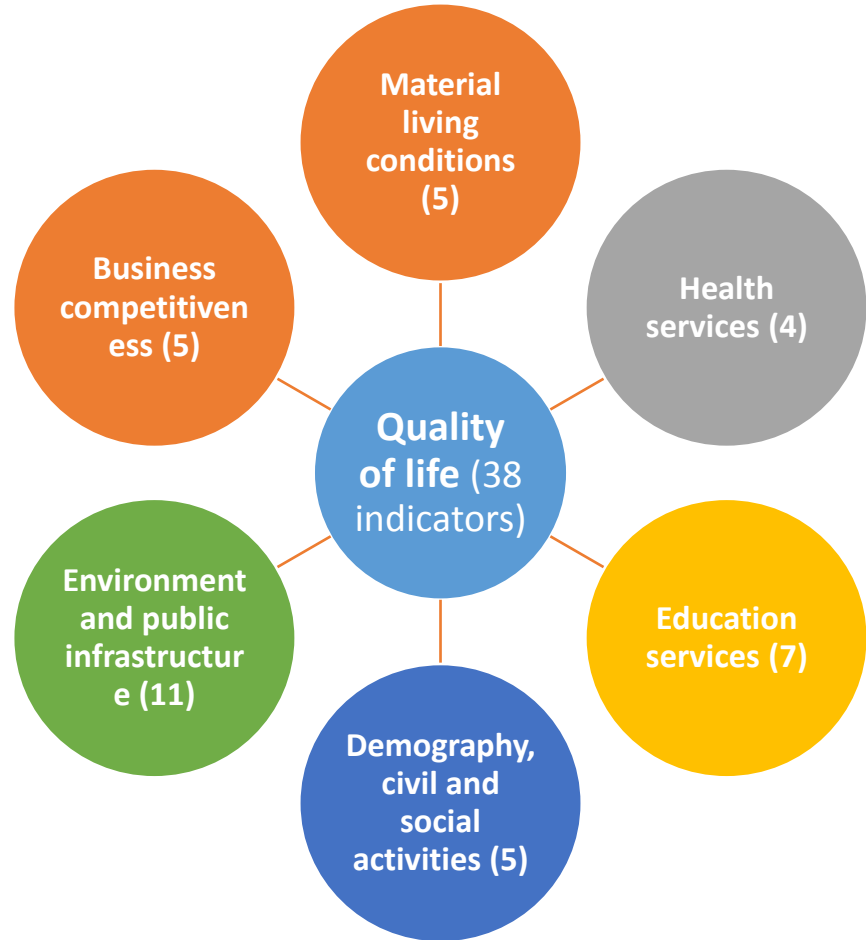


LT - LAU1



Quality of life index for Lithuanian municipalities

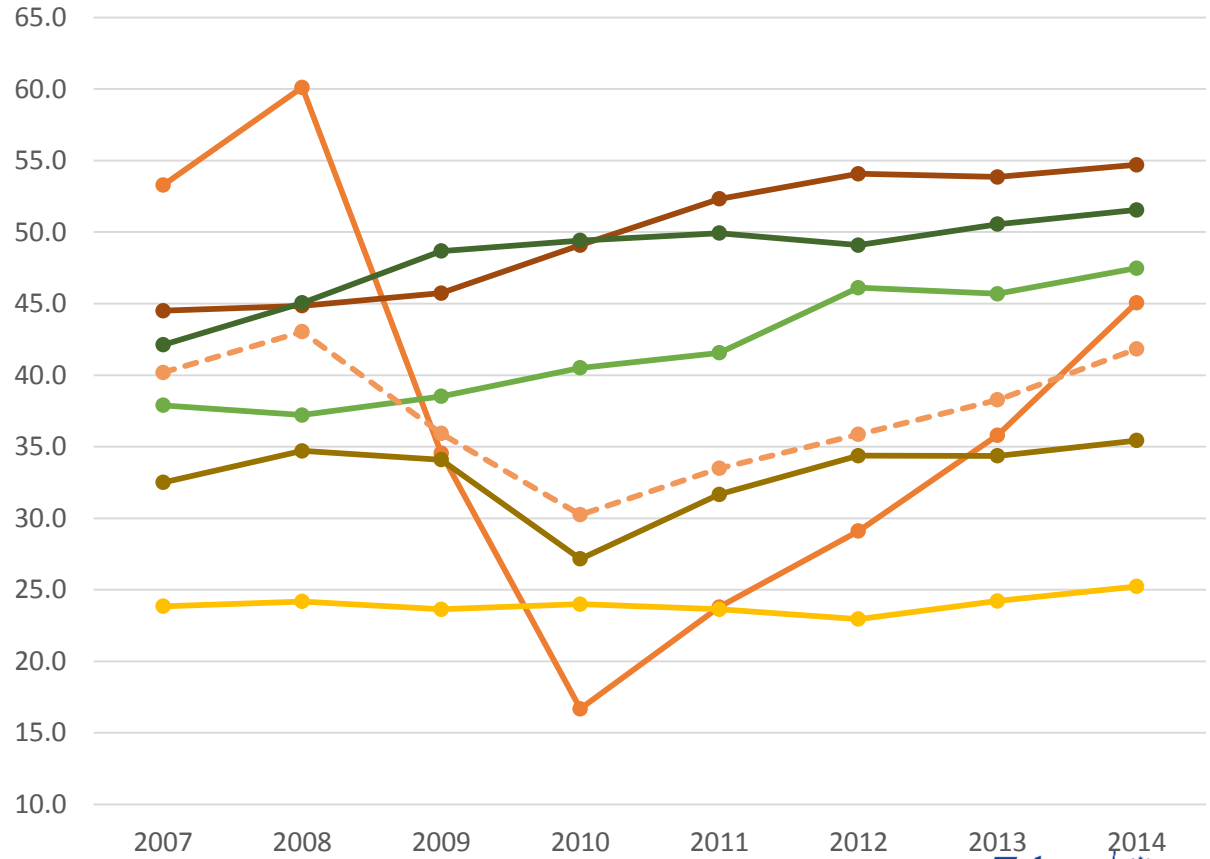
- 6 dimensions;
- 38 indicators (objective measurement);
- 8 years (2007-2014);
- Results comparable between LAU1 units and years.



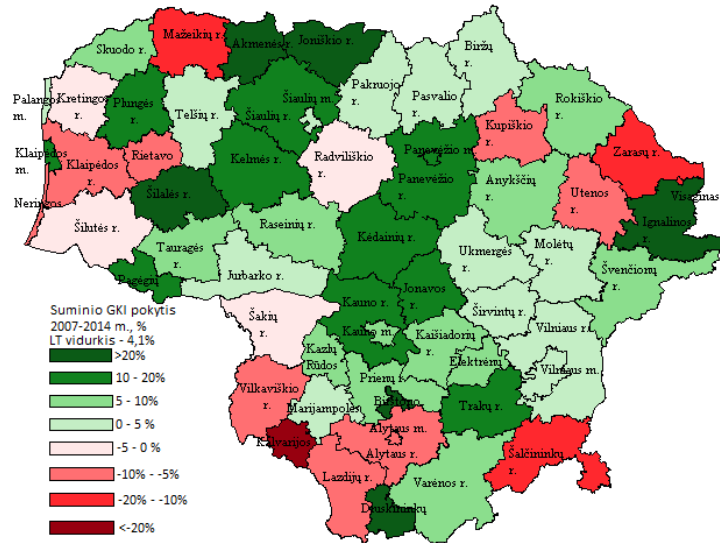
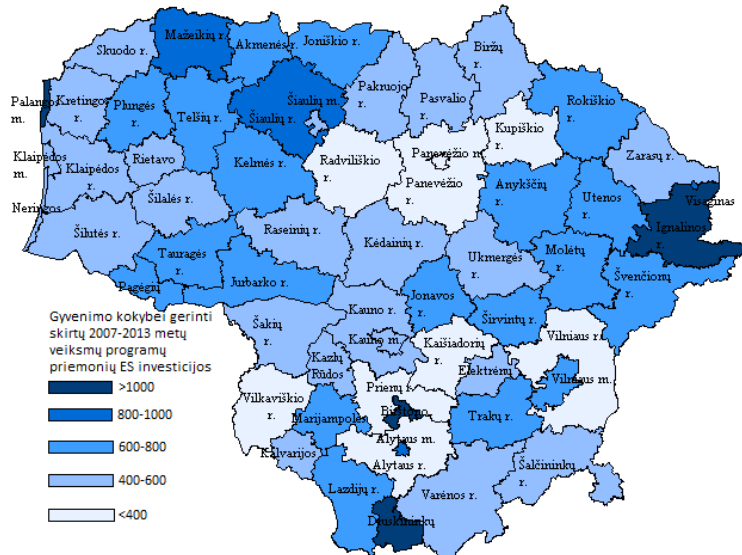
How did quality of life change in 2007-2014?

Dynamics of quality of life index and its sub-indexes in 2007-2014 (LT average)

- Material living conditions
- Entrepreneurship and business competitiveness
- Health services
- Educational services
- Demography, civil and social activities
- Environment and public infrastructure
- QUALITY OF LIFE INDEX



What was the impact of ESIF on quality of life?



Conclusions

- Quality of life is multidimensional – no single indicator (or set of several indicators) could reflect this complexity;
- GDP/ GDP per capita has limitations:
 - It is an indicator of current economic activity;
 - It does not reflect well-being and sustainability of economic activity;
 - It is available only for NUTS3 regions.
- Quality of life should be measured at the lowest level possible (LAU1 or lower) and should take into account perceptions, subjective well-being;
 - Comparable data are needed to measure impacts of ITI's (objective and subjective evaluation);
 - Reliable and comparable quantitative data “don't grow on trees” - investments are needed to develop statistics and collect data.
- ESIF isn't the only factor that counts in improving quality of life.

For more information:

- ESTEP Vilnius, *Evaluation of the impact of 2007-2013 EU Structural Assistance on Lithuania's cities and towns*, 2016.
 - EN summary: <http://esinvesticijos.lt/lt/dokumentai/evaluation-of-the-impact-of-2007-2013-eu-structural-assistance-on-lithuania-s-cities-and-towns-summary>
 - Interactive maps with evaluations results: www.maps.lt/ES_statistika
 - EN booklet with evaluation results: http://esinvesticijos.lt/uploads/publications/docs/28_53a4c96b1216f46538d748c896e121ec.pdf
 - Video: <http://www.esinvesticijos.lt/en/video/view/id.109>
- ESTEP Vilnius, *Evaluation of the impact of EU structural assistance on quality of life, social exclusion and poverty reduction in Lithuania*, 2014.
 - EN summary: http://www.esparama.lt/es_parama_pletra/failai/fm/failai/Vertinimas_ESSP_Neringos/Ataskaitos_2013MVP/Skurdo_vertinimas_summary.pdf



Klaudijus MANIOKAS
k.maniokas@estep.lt



Neringa VIRŠILIENĖ
n.virsiliene@estep.lt