



2014-2020 Operational Programme for the European Union Funds Investments in Lithuania

7th biannual international evaluation conference

EVALUATION OF INNOVATIONS AND INNOVATIONS IN EVALUATION



MINISTRY OF FINANCE



18-19th of May 2017

Sapiegos Vilnius Tech Park | Antakalnio str. 17 | Vilnius, Lithuania

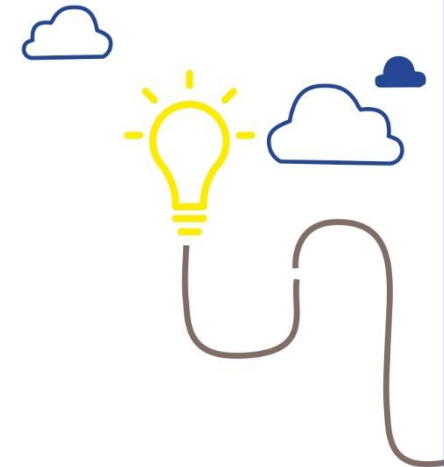
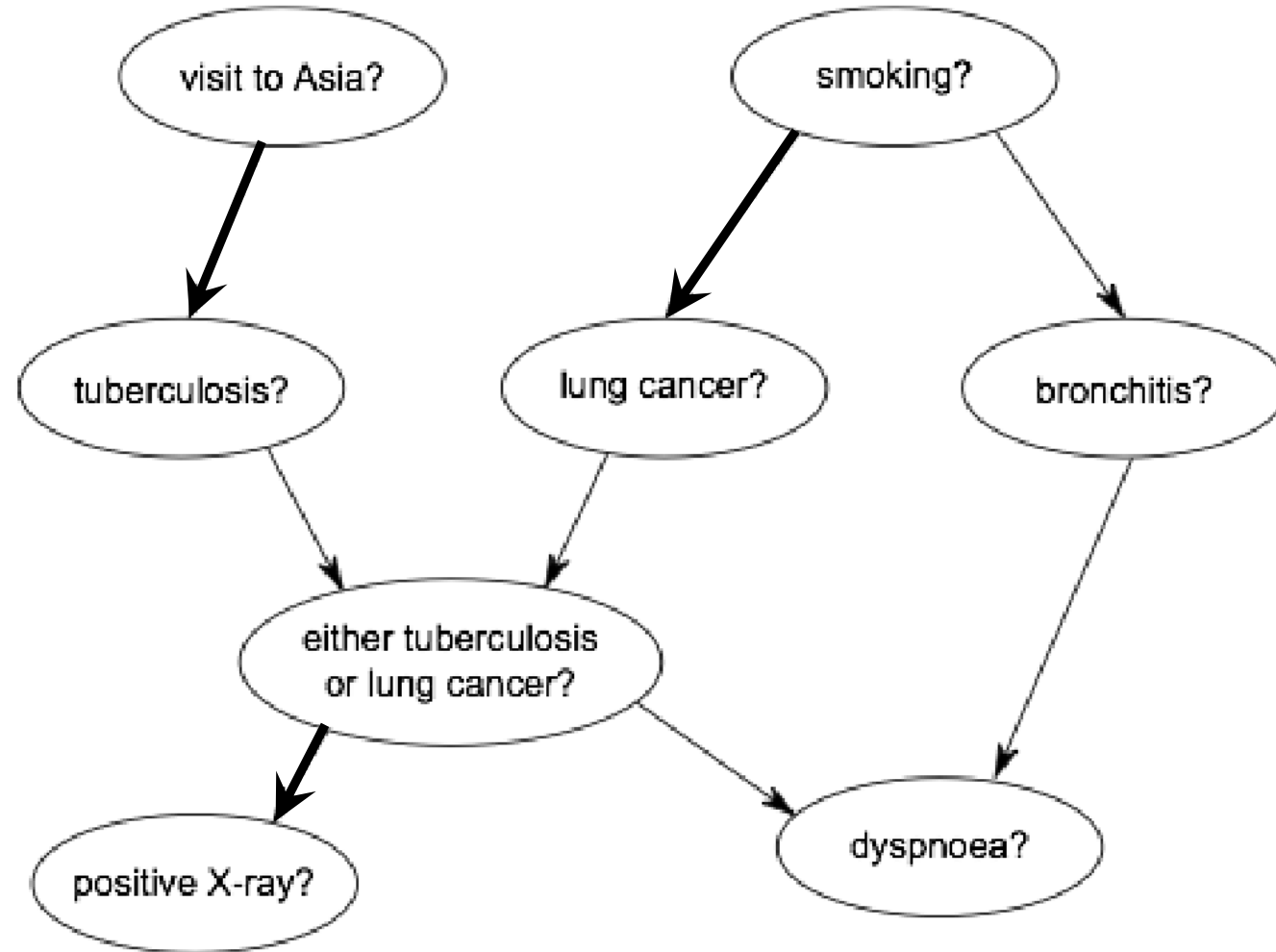
Emanuela Sirtori – Centre for Industrial Studies (CSIL)

Evaluating Business Support Measures: the Bayesian Network approach

Birth of an idea



Bayesian Network Analysis (BNA) applied

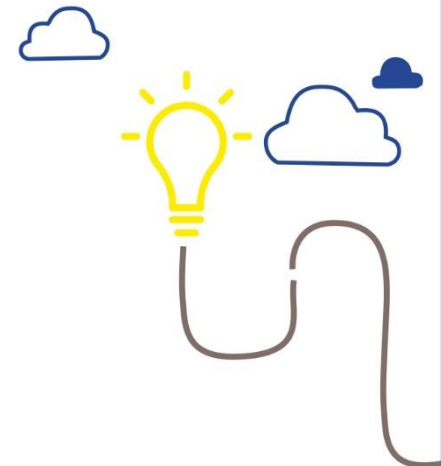


BNA to evaluate business support policies

Ex-post evaluation of ERDF programmes 2007-2013

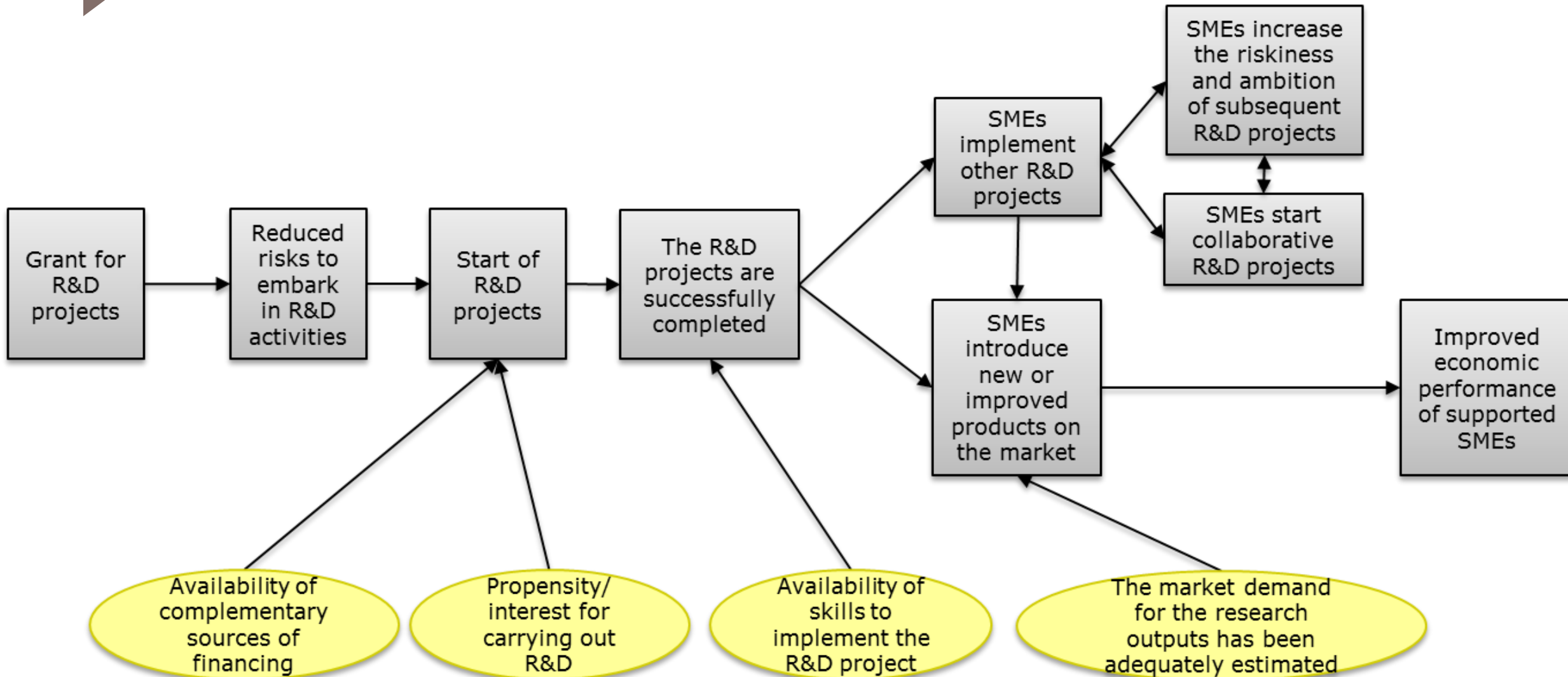
Work Package 2: Small and medium sized enterprises, innovation, ICT

- Theory-based impact evaluation
- 3 policy instruments
- 3 on-line surveys
- 700 beneficiary small enterprises (SMEs) surveyed



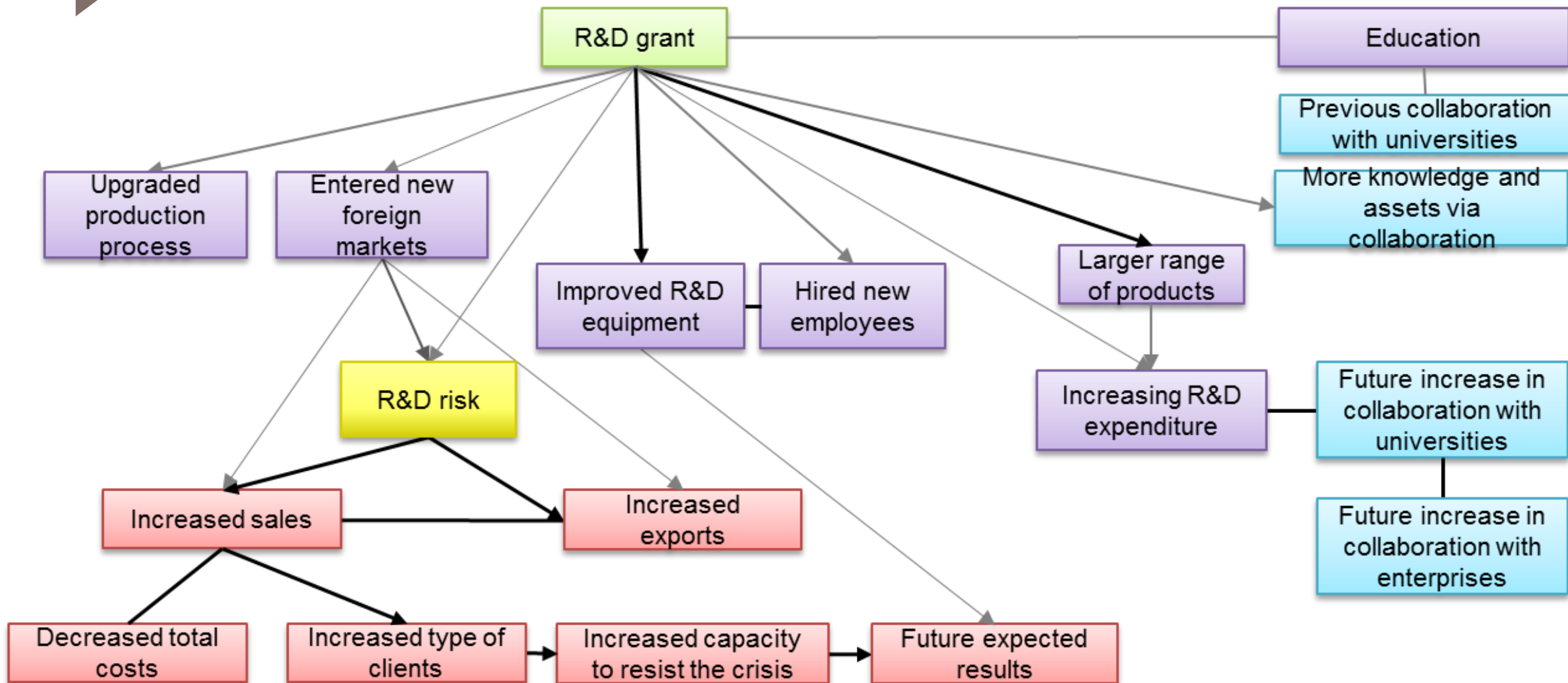
An example: Support to R&D in Castilla Y Leon

Theory of intervention



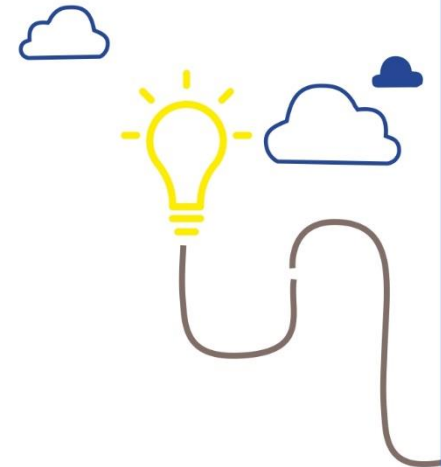
An example: Support to R&D in Castilla Y Leon

Bayesian Network



Value added of BNA

- Test the theory
- Multiple relationships between variables
- Explain (causal) links
- Find unexpected links
- Not only quantitative variables



Which role for BNA?

Purpose of evaluation	Accountability for results	Learning for improvement	
Main evaluation question	What has been achieved? How much progress has been made?	What works in solving the problem?	Why it works or does not?
Main analytical challenge	Finding evidence on the contribution of the policy	Establishing the causal link between policy and outcomes	Identifying causal mechanisms
Main analytical tool	Indicators and targets	Counterfactual-based methods	Theory-based methods



Would you like to know more?



Ms Emanuela SIRTORI

*Partner and Project Manager,
CSIL Centre for Industrial Studies*

ITALY



E-mail: sirtori@csilmilano.com
www.csilmilano.com

